

Brillant 270 Cut Off Machine



Automatic, Versatile

The **Brillant 270 Cut Off Machine** combines the best design characteristics of ATM cut off machines with precision control, two-axis cutting movement. A 17" (432mm) cut off wheel and a 12kW (16 HP) motor provide the ability to cut a 6 inch round cross section.

Solid welded aluminum plate construction houses a powerful motor that is mounted outside the cutting chamber. The large, stainless steel T-slot table will accommodate a wide variety of clamps including the best quick clamping vice on the market.

Only the Brillant series offers cutting modes such as step, pulse, saw, orbital and wave that reduce the contact area of the cutting wheel for cutting very hard or large parts.

The Brillant 270 is ideal for large part or high volume sectioning.



Brillant 270

Cut Off Machine

Max Cutting Capacity:
155 mm / 6.1" Diameter

Max Cut Off Wheel Size:
432 mm / 17"

Arbor Size:
32 mm (40 mm Optional)

Table Size:
500 X 425 mm
12 mm T-slot

Horizontal Table Movement:
360 mm / 14.1" Travel

Vertical Wheel Movement:
200 mm / 8"

Speed: 2000 rpm

Motor: 12kW (16 HP)

Power: 400V, 50 Hz,
3 Phase

Dimensions W x H x D:
1200 x 1600 x 1100 mm

Weight: 750 kg

Recirculation System:
170 L / 45 Gallons

Automatic Central Greasing
System

Optional:
Z-axis Table
for Parallel Sectioning
Range: 100 mm / 4"

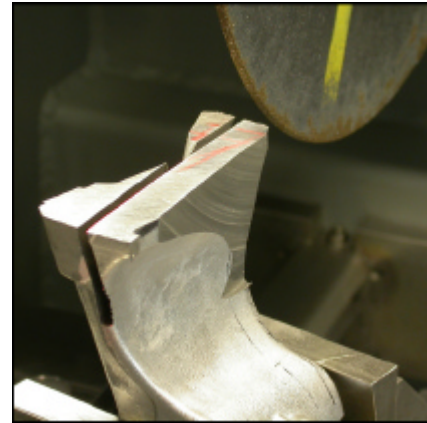
Mist Extractor

Laser Alignment Tool

High Volume Recirculation
Band Filter



Graphical Touch Screen Controller is mounted on an adjustable pivot arm away from the cutting environment



Well illuminated **Cutting Chamber** can hold large and very long parts. The Clamp 80 with pinch plate mechanism is the best quick clamping device



Optional **Mist Extractor** keeps cutting chamber clean and aids in clear visibility of cutting operation.



Large, **170 Litre Aluminum Recirculation System** is mounted on wheels for easy cleaning and uses filter bags to preserve coolant life.

MetPrep Ltd, Curriers Close, Charter Avenue, Coventry. CV4 8AW.
Tel: 024 7642 1222 Fax: 024 7642 1192
Email sales@metprep.co.uk Website www.metprep.co.uk