

New Bilton News



Issue number 31 Spring 2006

Supported by the Heart of England Community Foundation, a charity for Coventry and Warwickshire

Welcome to Issue 31. I hope your winter was flu-free, if not, commiserations. Do write in with your stories, poems, and jokes. Does anyone have a story to tell about something funny, peculiar or a strange coincidence that happened to him or her? Or a bit of family history? I would love to hear from you. It need not be long. Contributions all welcome. 2006 NBN deadlines are 19th May, 19th July and 19th November. Do log on to the New Bilton Community Association website www.newbiltonrugby.co.uk for news and views. You can post messages on a variety of topics and have your say. Many of you are using it. So far the hit counter registers nearly 15,000.

Sheela Hammond, Editor.

To Friends with Pets

Dear Dogs and Cats:

The dishes with the paw print are yours and contain your food. The other dishes are mine and contain my food. Please note, placing a paw print in the middle of my plate of food does not stake a claim for it becoming your food and dish, nor do I find it aesthetically pleasing in the slightest. The stairway is not a racetrack. Beating me to the bottom is not the object. Tripping me doesn't help because I fall faster than you can run.

I cannot buy anything bigger than a king sized bed. I am very sorry about this. Do not think I will sleep on the couch to ensure your comfort. Dogs and cats can actually curl up in a ball when they sleep. It is not necessary to sleep perpendicular to each other stretched out to the fullest extent possible. I also know that sticking tails straight out and having tongues hanging out the other end to maximize space is nothing but sarcasm.

For the last time, there is not a secret exit from the bathroom. If by some miracle I beat you there and manage to get the door shut, it is not necessary to claw, whine, meow, try to turn the knob or get your paw under the edge and try to pull the door open. I must exit through the same door I entered. Also, I have been using the bathroom for years - canine or feline attendance is not mandatory.

The proper order is kiss me, then go smell the other dog or cat's butt. I cannot stress this enough!

To pacify you, my dear pets, I have posted the following message on our front door:

Rules for Non-Pet Owners Who Visit and Like to Complain About Our Pets. They live here. You don't.

If you don't want their hair on your clothes, stay off the furniture. (*That's why it's called "fur"niture.*)

I like my pets a lot better than I like most people.



To you, it's an animal. To me, he/she is an adopted son/daughter who is short, hairy, walks on all fours and doesn't speak clearly. Dogs and cats are better than kids ... they eat less, don't ask for money all the time, are easier to train, usually come when called, never drive your car, don't hang out with drug-using friends, don't smoke or drink, don't worry about having to buy the latest fashions, don't wear your clothes, and don't need a gazillion pounds for university - and if they get pregnant, you can sell the children.

Now then, do we understand each other?

THE RUGBY CREDIT UNION

The refurbishment of the New Bilton Community Association was completed at the end of January 2006. The Wednesday collection points are now open again - every Wednesday, between 10 and 11am.

FLORAL INTERWORLD THE FLORIST

Find us in Talking Pages 0800 600 900

Cake Decorations •

MON - FRI 9am - 6pm
SATURDAY 9am - 5.30pm
SUNDAY 10am - 4pm

216a LAWFORD ROAD
RUGBY

TEL: 01788 540287

Cakeboards •



Latex helium filled balloons
from £1.20 each

We Gift Wrap Free

What Is Community Freebay?

In Warwickshire and Coventry many of the things, which we throw away as 'rubbish', are in fact useful items, which could be passed on to someone else.

If you have unwanted things which are just too good to tip, and you don't want the hassle of trying to sell them, this website is sure to put you in touch with someone local who can put them to good use. You can also browse a large variety of items advertised by other people, and get them for free if that's what you need. This website allows you to contact people by e-mail to give or receive free things. Once you've made the link it's up to you to arrange collection / delivery with the other person.

It's easy – just register by clicking

www.communityfreebay.co.uk

Rugby Borough Council Elections – 4th may 2006

To vote in these elections, you must be on the electoral register at your present address – the deadline for inclusion on the register is **13th March 2006**. If you are not sure whether you are on the electoral register, please contact the Elections Office at the Town Hall on (01788) 533526 or e-mail elections@rugby.gov.uk

Postal Or Proxy Voting

Electors may request a postal vote if they feel unable to vote in person at their local polling station. Proxy votes can also be requested in certain circumstances. Application forms are available **NOW** from the Elections Office, Town Hall, Rugby Tel: (01788) 533526 or e-mail elections@rugby.gov.uk. You can also print off these forms from the Council's web-site at www.rugby.gov.uk

The closing dates for the receipt of completed applications are:

- Postal votes – 5.00pm Tuesday 18th April 2006
- Proxy votes – 5.00pm Tuesday 25th April 2006

If you have already applied to have a postal or proxy vote on a long-term basis, there is no need to re-apply.

**David Dalby, Head of Elections and Membership Services,
Rugby Borough Council, (01788) 533526 or e-mail
elections@rugby.gov.uk**

A Note of Caution: New Bilton polling stations are usually the New Bilton Community Association Centre, Gladstone Street, the Indian Community Centre, Edward Street, St Oswald's Church, Lawford Road and Oakfield School, Mertens Drive. There may be others. Bring your voter registration card with you - and check it carefully - before setting off to vote: your polling station may have changed. In previous elections, voters have been frustrated to find that on arrival they are at the wrong polling station.

WORRIED ABOUT HEATING BILLS?

This organisation was recommended during the "Moneybox" programme on Radio 4. It was sent to me by a friend who has just received an astronomical bill from British Gas. She will be changing to Ebico immediately.

For more information about Ebico and its services, write to Ebico Ltd, PO Box 354, Witney OX29 7WN, tel 0845 456 0170, email info@ebico.co.uk or see www.ebico.co.uk

Rugby Freecycling

The Rugby Freecycle group is open to all who want to "recycle" that special something rather than throw it away. Whether it's a chair, a fax machine, piano or an old door, feel free to post it. Or maybe you're want to acquire something yourself! Non-profit groups are also welcome to participate too! One main rule: everything posted must be free. This group is part of The Freecycle Network, a non-profit organization and a movement of people interested in keeping good stuff out of landfills. Check out freecycle.org for other cities and info on the movement! E-mail rugbyfreecycle-owner@yahoo.com for questions or improvement ideas! And have fun and jump right in!

Post message: rugbyfreecycle@yahoo.com

Subscribe: rugbyfreecycle-subscribe@yahoo.com

Unsubscribe: rugbyfreecycle-unsubscribe@yahoo.com



Environment Agency Seeks your Views!

Over the next few weeks the Environment Agency is about to conduct a door to door survey with households living near to the CEMEX plant in New Bilton and neighbouring communities to allow a general picture of the views of local people to emerge over living next door to the industrial plant. The Environment Agency has also agreed to meet local groups such as the New Bilton Community Association and Action groups involved in reNEW (Urban Renewal) such as the Environment and Transport Actions Groups. If any other group is interested in talking to the Environment Agency please contact Roy Sandison on 541 064 or by email to SANDISONR@AOL.COM and he will forward your details to the Environment Agency.



BUSICOM

**Printer/Fax Cartridges and Inks
Computer Stationery and Consumables**

**Phone: 01788 541399 • Fax: 01788 544537 • Mobile: 07831 256995
email: palus@supanet.com • website: www.busicom.org.uk**

Electric Mobility Scooters

There are an increasing number of scooters on the streets of Rugby and in New Bilton too. There may be confusion among motorists, cyclists and pedestrians and possible scooter users about what type can be used where. Mind you, it would help considerably if 1) the pavements were in a fit state which to travel without suffering excruciating pain and 2) there were no cars or wheelie bins parked on pavements. Back to scooters. There are 2 categories:

Class 2: These can be used on pavements only and have a maximum of 4mph. If pavements are inaccessible you may find Class 2 vehicles on the road.

Class 3: These scooters are permitted on roads and have a maximum speed of 8mph. They may travel on the pavement only when fitted with a restrictor switch that limits the speed to 4mph when necessary. Only a person with a physical impairment over the age of 14 years may use Class 3 vehicles that are fitted with front and rear lights, reflectors and indicators, a working horn, rear-view mirrors and brakes.

THINK BIKE!!!

Take longer to look for bikes

Motorists are being called upon to take an extra split second to be aware of motorcyclists, a pause which could mean the difference between life and death

Warwickshire County Council's Road Safety Unit is backing a Department for Transport campaign launched this week to encourage drivers to 'THINK! Take longer to look for bikes'.

Despite a drop in motorcycle casualties in Warwickshire last year, bikers who represent just one per cent of road users, still account for 17 per cent of fatalities. With four motorcyclists killed and 74 seriously injured in the county in 2005, compared with 11 killed and 88 seriously injured in 2004, there is no room for complacency, says Cllr Martin Heatley, the county's Cabinet member for Environmental Services. He said: "In many cases the common cause of motorcycle crashes is 'right of way' violation. The majority of these incidents occur at T-junctions and it is usually the motorist – rather than the biker – who is at fault.

Many drivers somehow fail to see a motorcyclist or judge the speed and distance of an approaching biker, so we are fully supporting this campaign to get drivers to spare a few vital seconds to take a longer look for bikes."

**Tell me
and I'll forget;
show me and I may
remember;
involve me and I'll
understand.**

*Wise Chinese
saying.*

VENUES FOR HIRE IN NEW BILTON

There are several venues in New Bilton. Rugby CVS holds a comprehensive database of venues for hire in Rugby including the Indian Community Centre, the Oakfield Bowling Club, the New Bilton Community Association, and St Oswald's Church to mention but a few. If you want to hire a venue in the area, telephone the Rugby CVS on 01788 574 258 to get contact details.

Green Woodland Burial and Natural Burial Grounds

Britain's cemeteries are full, and cremation wastes energy and releases greenhouse gasses. Why not buy a plot in a field and ask your relatives to plant a tree over your grave? If others do the same and you all attach an entail to the land, you've created a protected wood. Who wouldn't prefer feeding English oaks to pushing up daisies?

With more than 160 sites in the UK, woodland burial is taking off. Cloverly Woods in Aberdeenshire opened recently with room for 12,000 bodies in 37 acres. Some smaller sites are less than an acre in size. Churches own some sites, local authorities and private landowners the rest. Typically farmers turn over a field or two to woodland burials, and contract out the running to a local funeral director and forester. It is an ideal source of income as the EU cuts farm subsidies.

Some people want to be buried in an established wood, but most prefer an ordinary field in the hope that in this way they can help create woodland. Many sites insist on cardboard coffins but most allow a wide range of types of funeral. The costs of a plot range from a few hundred to over a thousand pounds. The Natural Death Centre in London estimates that hundreds of people are now being buried this way every month.

It looks like very good news. A couple of thousand acres of permanent broad leaved woodland will be created over the next 30 years or so by the voluntary contributions of private individuals looking for a tasteful burial site. Lets hope the idea takes off.

Jim Thornton, Nottingham, 9 September 2003,

http://www.igreens.org.uk/woodland_burial_sites_uk.htm or
<http://www.greenhavenwoodland.com/>

The Natural Death Centre is the only organisation in the UK to keep a fully up-to-date list of all the natural burial grounds, biodegradable coffin manufacturers For how to obtain full details of all the 200-plus natural burial grounds in the UK, please see www.naturaldeath.org.uk or write to 6 Blackstock Mews, Blackstock Road, London N4 2BT, tel 0871 288 2098 fax 0207 354 3831.



CHATER BROS. WINDOWS

26 Jubilee Street, Rugby
Telephone: (01788) 540245



We are a family run local business and have been established for 12 years.

We manufacture a large selection of Windows, Doors, Porches and Conservatories and offer friendly, professional advice. We can also provide Fascias & Soffits.

Arts Celebration in Warwickshire

Are you a local artist or craft designer who would like to get more exposure for your work? Would you like to join in Artsweek 2006 and exhibit your work at a venue in Warwickshire?

Artsweek 2006 is a biannual event and it runs from 1-16 July. Last year some 134 artists exhibited in 119 venues, attended by 24,000 visitors and generating approximately £67,000 in sales by artists. Brenda said, "The fourth event in 2006 promises to be bigger and even better with visual arts and crafts representing all aspects of Warwickshire communities. Venues start getting booked up very quickly so artist should start looking and book their venues as soon as possible. Please take advantage of our extended registration deadline, now 31st March "

Artsweek is open to all artists – young and old, amateur and professional and registration forms are available by contacting the County Arts Service on tel 01926 412 492 or by emailing countyartsservice@warwickshire.gov.uk. Visit the website to see some of the artists who exhibited at the last Artsweek on www.warwickshire.gov.uk/artsweek2004.

SEARCH FOR A STAR!

Set against a backdrop of luxury, wealth and international locations, couples are swept up in intense emotion. Seduction and passion guaranteed. If you think you're up to the challenge of writing for Mills & Boon, why not take part in this unique competition in association with Warwickshire Libraries. Hints and tips on writing for Mills & Boon are available on the Mills & Boon website. Look under "Aspiring Authors" www.millsandboon.co.uk.

Family History Quest

I am researching my family history and would welcome hearing from anyone in New Bilton who may have known my grandmother's family. Her maiden name was Rosetta Brooks. She married Harry Woodings in 1911 at St. Michael's Church in Brownsover and they lived in Campbell Street during the First World War. They had three children, Howard, Marjorie and my father, Leonard. Rosetta had several sisters, Louisa who married Harry Gribby, Annie, Em, and Ada. She also had brothers –Bill and Walter were the names of two of them.

I believe that Em (short for Emma, I think) had fourteen children and most of them lived in the New Bilton area. Annie and Ada married two brothers, one of whom was called Harry. Walter was a cobbler. Harry Gribby worked for Thomas Hunter Ltd for over forty years. *Joyce Woodings, Corbett Street*

SCAMS AWARENESS MONTH

February was scams awareness month, and to raise the awareness of scams among Warwickshire's consumers and businesses Warwickshire County Council Trading Standards Service launched the '*Bogus Bugle*' newspaper, filled with the most up to date information on the most common scams targeted at Warwickshire people.

The *Bogus Bugle* will be distributed to libraries, community organisations, Neighbourhood Watch Associations, businesses, Parish and Town Councils, Residents Associations and others. Noel Hunter, Director of Warwickshire County Council Trading Standards Service said: 'Incredibly, almost 50% of the UK population have at some time or another been targeted by a scam, and five million people have fallen victim. Most of these scams exploit low-cost, mass-marketing techniques - that is, email, text message, post, telephone and internet - to con people out of their money. But we believe that by educating consumers and businesses about the ways in which criminals go about orchestrating their cons, we can help protect people and help to make significant inroads in to this figure.'

Throughout scams awareness month the Trading Standards Service highlighted the scams that most affected consumers and the business community, and provided practical advice on how everyone can reduce their chances of becoming a victim. Copies of The *Bogus Bugle* are available direct from Warwickshire Trading Standards Service, tel 01926 414 040, or can be downloaded from www.warwickshire.gov.uk.

Sweepstake Con, Rugby

Consumers have reported receiving a letter from a Toronto Company claiming that they have been issued an escrow account and are eligible to receive a cheque for £5000. The recipients are asked to send £20 to receive their prize. However the small print reveals that the sender will simply be placed in to a sweepstake to win £5000 at odds of 1:550,000.

CHINESE YEAR OF THE DOG

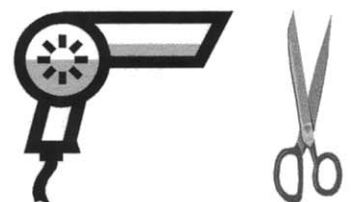
Those born in the Year of the Dog are blessed with most of the finer traits of human nature. Like the dog, they are loyal and possess a profound sense of duty. Since they try to do their best, they make wonderful workers. People born in this sign can be counted upon to keep a secret. For the most part, others hold dog people in high regard. Yet they, too, can be selfish, eccentric obstinate. They fail miserably at social affairs because of their coldness and aloofness. Detesting small talk they refuse to indulge in it. Their worst flaws are faultfinding and sarcasm. Dog people are renowned for championing good causes, as they cannot stand injustice.



52 Avenue Road,
New Bilton,
Rugby.

Kay's Hairdressing

Hairdressing with caring
professional service.
Competitive prices.
Senior citizen's reductions.



Telephone 577679

Alfie and Perry's **Beginner's Guide to Rugby**

(not for beginners, but by beginners)

Origins: During the Eton Wall game in 1822 the team from Rugby, who were Tom Brown's schoolmates, got tired of trying to kick the ball and picked it up and ran away. The Wall Game has continued for the past 184 years without anyone realising there is neither a ball nor an opposing team.

William Webb Foot: A famous player at Rugby School who had a distinct advantage in the wet.

Flashman: Another of Tom Brown's schoolmates, he pioneered the wearing of particularly short shorts. This led to key elements of the modern game.

Haka: Traditional Maori way of adjusting shorts prior to the kick-off.

Swing Low, Sweet Chariot: English way of adjusting shorts.

Scrummage: Old shorts donated by former rugby players.

Sir Clive Woodward: Everyone laughed when he invented the personal electric car, but Johnny Wilkinson now uses it as regular transport to and from hospital appointments.

Six Nations: The number of countries that understand the rules.

Right-head Prop: Player who has been to the pub before the game.

Running Up the Wing: What a particularly tight player might do on an aeroplane.

Number 8: Perfume that smells of sweat, liniment and mud.

Seven-a-Side: Result of a particularly violent game.

Conclusion: Rugby rules are too complex to be understood, and so are generally ignored unless the game is televised,

when former players are forced to make up a plausible scenario to explain the carnage on the pitch.



As told to Simon Hardeman and Spike Breakwell in The Cardiff Arms, Twickenham.

New Definitions - Very Punny!

ADULT: A person who has stopped growing at both ends and is now growing in the middle.

BEAUTY PARLOUR: A place where women curl up and dye.

CANNIBAL: Someone who is fed up with people.

CHICKENS: The only animals you eat before they are born and after they are dead.

COMMITTEE: A body that keeps minutes and wastes hours.

EGOTIST: Someone who is usually me-deep in conversation.

GOSSIP: A person who will never tell a lie if the truth will do more damage.

HANDKERCHIEF: Cold Storage.

MOSQUITO: An insect that makes you like flies better.

SECRET: Something you tell to one person at a time.

SKELETON: A bunch of bones with the person scraped off.

TOOTHACHE: The pain that drives you to extraction.

TOMORROW: One of the greatest labour saving devices of today.

WRINKLES: Something other people have. You have character lines.

UP THE CREEK

Once there was a little boy and his family who lived in the country. He had to use an outhouse, and the little boy hated it because it was hot in the summer and cold in the winter and stank all the time. The outhouse was on the bank of a creek and the boy determined that one day he would push that outhouse into the creek. One day after a spring rain, the creek was swollen so the little boy decided today was the day to push the outhouse into the creek. So he got a large stick and started pushing. Finally, the outhouse toppled into the creek and floated away. That night his dad told him they were going to the woodshed after supper. Knowing that meant a spanking, the little boy asked why. The dad replied, "Someone pushed the outhouse into the creek today. It was you, wasn't it son?" The boy answered yes. Then he thought a moment and said, "Dad, I read in school today that George Washington chopped down a cherry tree and didn't get into trouble because he told the truth." The dad replied, "Well, son, George Washington's father wasn't in the cherry tree."

Editorial Information

Editor: Sheela Hammond, 220 Lawford Rd, New Bilton (842 952)

Advertising Co-ordinator: Cllr. Don Williams, 134 Bath Street, Rugby CV21 3JA (561 828)

Distribution Co-ordinator: John Bromwich (574 402)

Production: Manor Printing, Somers Road, New Bilton (541 040)

Whilst every effort is made to ensure that information contained in this newsletter is correct, the views and opinions expressed are not necessarily those of the Editorial Committee, that reserves the right to edit all contributions including letters.

New Systems

Repairs

Upgrades

Ink & CD/DVD Media

BITZ & BYTES PCs

165 Murray Road, Rugby

Call Mark on (01788) 570047

email: bitzbytespcs@dsl.pipex.com

Hardware

Printers

Networks

Photo Paper

Old, Older, Oldest

I had my doctor's permission to join a fitness club and start exercising. I decided to take an aerobics class for seniors. I bent, twisted, gyrated, jumped up and down, and perspired for an hour. But, by the time I got my leotards on, the class was over.

Reporters interviewing a 104-year-old woman: "And what do you think is the best thing about being 104?" the reporter asked. She replied, "No peer pressure."

The nice thing about being senile is you can hide your own Easter eggs

Just before the funeral services, the undertaker came up to the very elderly widow and asked, "How old was your husband?" "98," she replied. "Two years older than me." "So you're 96," the undertaker commented. She responded, "Hardly worth going home, is it?"

I'm really old! I've had two bypass surgeries, a hip replacement, and new knees. Fought prostate cancer and diabetes. I'm half blind, can't hear anything quieter than a jet engine, take 40 different medications that make me dizzy, winded, and subject to blackouts. Have bouts with dementia. Have poor circulation; hardly feel my hands and feet anymore. Can't remember if I'm 85 or 92. Have lost all my friends. But, thank God, I still have my driver's licence!

An elderly woman decided to prepare her will and told her preacher she had two final requests. First, she wanted to be cremated, and second, she wanted her ashes scattered over Tesco. "Tesco?" the preacher exclaimed. "Why Tesco?" "Then I'll be sure my daughters visit me twice a week

My memory's not as sharp as it used to be. Also, my memory's not as sharp as it used to be.

Know how to prevent sagging? Just eat till the wrinkles fill out.

I'm getting into swing dancing. Not on purpose. Some parts of my body are just prone to swinging.

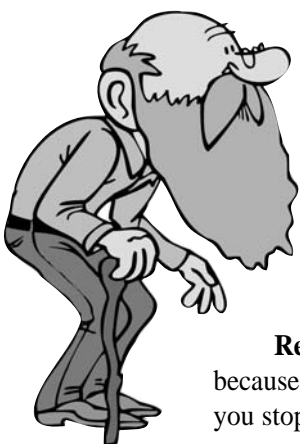
It's scary when you start making the same noises as your coffeemaker

These days about half the stuff in my shopping cart says, "For fast relief".

Don't think of it as getting hot flushes. Think of it as your inner child playing with matches.

Don't let aging get you down. It's too hard to get back up!

Remember: you don't stop laughing because you grow old; you grow old because you stop laughing.



'A Community Working Together'

The New Bilton and part Newbold Renewal Area was named reNEW symbolising partnership working and community participation. There are five reNEW action groups: Crime and Community

Safety, Environment, Leisure and Education, Local Economy and Roads and Transport. We joined up as residents and volunteers. Please join us in making the reNEW area a better place in which to live - we all live here and we cannot do it without one another!

Contacts:

The New Bilton Community Association Centre, 1 Gladstone Street, Rugby CV21 2JP, email www.newbiltonrugby.co.uk.

Nick Doyle, Rugby Borough Council on 01788 533 861.

Do we Have a Snowball Effect?

Wednesday 8th February saw the New Bilton Community Association Centre on Gladstone Street filled with enthusiastic attendees for the second reNEW swap shop. This was the meeting of all the Action Groups who exchanged reports on progress or otherwise of the various plans and activities.

Paul Larcombe, the Public Spaces and Community Safety Manager, and by Stephen Marks, Sustainability Co-ordinator both officers of the Rugby Borough Council made presentations on the reNEW environment and how best to improve it.

Subjects raised were footpaths and parks and concern that some footpaths were felt not only to be threatening but threatened by disappearance altogether or of being crossed by a pipeline and other hazards. Research will be carried out and also possible plans made for public gardens and planting

It was felt that there was a long way to go with the question of rubbish collection, recycling and litter in general. A meeting is to be arranged with the appropriate Borough Council Officer.

So what does all this mean? I say that some momentum is gathering, not huge but enough to snowball if some push is applied to overcome inertia. We need to have something to show for all our efforts, to attract the attention of more and more residents in the renewal area and New Bilton in general. This is because the reNEW initiative is meant largely to be resident-led, and everyone has a right to a say - and an even bigger right actually to help out - with this important improvement plan. If you have a particular interest in our living environment and want to contribute to making our quality of life better, please join our group. Write to us at 1 Gladstone Street, Rugby CV21 2JP, email www.newbiltonrugby.co.uk or contact Nick Doyle at the Council.

Josephine Howard, on behalf of Environment Action Group



**11 Paynes Lane
Rugby**

AUTOCENTRE

- Friendly service from experienced staff
- Full repair & service facilities for cars
- Motorcycle MOT & tyre service
- 4 exhaust fitting bays - BOSAL exhausts fitted from stock
- 2 service/repair bays
- 1 dedicated MOT bay
- Full tyre fitting service - full range of quality & budget tyres plus puncture repairs & laser wheel alignment
- Comfortable waiting room with FREE hot drinks

**The Complete
Maintenance Service
For Your Vehicle
By Your
Local Friendly Garage**

Tele: 01788 542292





Coffee and Crackers

The Leisure & Education Action group members were very active before Christmas. We held three very successful coffee mornings for residents including newsletter volunteers, that were all very well attended. Every one that came filled in a form about what they thought were problems and their ideas of improvements for the area. Their reward was free entry in a raffle for a luxury Christmas hamper. The three lucky winners were *Beckie Johnston, Mr and Mrs Goulstone and John Bromwich*. Local Police Community Support Officers Frances Carty and Harry Mossop provided advice on crime prevention. Council representatives were on hand to advise on energy efficiency in the home. Members of the Hill Street youth group helped serve refreshments. Father Christmas visited St Oswald's and St Matthew' Schools' nurseries and the St Oswald's parent and toddler group with presents Christmas cards for all the children.

We are developing links with Hill Street Youth and Community Centre focusing on young people. We are currently looking at the Jubilee and Addison Road parks to see how we can improve the facilities for our children and families. We invite reNEW residents to join our group to help expand the scope of our work. Please come and join us. Write to us at 1 Gladstone Street, Rugby CV21 2JP, email www.newbiltonrugby.co.uk or contact Nick Doyle at the Council.

*Andrea Evans, Chairman,
Leisure and Education Action Group, reNEW*

New Bilton Western Relief Road meeting

The Western Relief Road will be the topic of discussion at a meeting on Wednesday, 29th March 2006, organised by the Warwickshire County Council starting 7.00pm at Indian Community Centre, Edward Street, Rugby. All residents are invited to attend.

After holding several meetings including one with Paul Cowley, Warwickshire County Council's local roads and highways representative, we decided to concentrate our efforts in the following areas:

- Measures to curb excessive speed in Edward Street
- A pedestrian crossing in the vicinity of Arnie's Sandwich Bar in Lawford Road
- Actively looking at the variety and cost of speed displaying devices

Positive News - The go-ahead has been given for the long overdue Rugby Western Relief Road, which should ease traffic problems around New Bilton when completed.

Following a detailed survey by Rugby Disability Forum, the WCC will be making substantial investment in installing and replacing drop kerbs throughout the borough over the next ten years.

Negative News - We wrote to Stagecoach management (Warwickshire) asking if they would consider re-introducing a bus service for the area. However to our disappointment, they replied that the service was not commercially viable. New members are most welcome to join our action group. Write to us at 1 Gladstone Street, Rugby CV21 2JP, email www.newbiltonrugby.co.uk or contact Nick Doyle at the Council.

*Navin Mistry, Chairman,
Roads and Transport Action Group, reNEW*



Calling All Residents!

Do something special for your street in 2006; apply to join the *Neighbourhood Watch*! Very soon you will have a letter through your door asking you to make a difference to the area you live in, helping to make the reNEW area a better and safer place to live, by forming a Neighbourhood Watch group. Some streets are going ahead with forming groups and the feedback from them is very positive.

Is your street or road one that looks out for its neighbours, for the elderly and the vulnerable amongst them? You could make it one where respect for each other and each other's property counts. We are not asking for a lot of your valuable time other than watching out what goes on around you and your home. Suspicious incidents can be reported in complete anonymity to the Neighbourhood Watch co-ordinator and can be followed up. Think how much distress your actions could save your neighbour or friend. Another distinct advantage: displaying Neighbourhood Watch signs could make a difference to your household insurance premiums as well as deterring any would be offenders.

Community Safety Wardens

The feedback from Christmas coffee mornings indicated that there are some concerns about vandalism and car crime in the area. The Community Safety Wardens were established in partnership with Warwickshire Police and other agencies to reduce the fear and incidence of anti-social behaviour across Rugby. They are:

- Patrolling known hotspots
- Investigating incidents, and sharing intelligence
- Taking enforcement action against perpetrators
- Diverting people into productive activities

If you are a victim of anti-social behaviour... **DON'T TOLERATE IT - REPORT IT!** Ring the Reporting Line: 0800 096 8800. Many of you are concerned with crime. Why don't you join our group, have your say and help do something about it. Write to us at 1 Gladstone Street, Rugby CV21 2JP, email www.newbiltonrugby.co.uk or contact Nick Doyle at the Council.

*Pauline Kimber, Chairman, Crime & Community Safety
Action Group, reNEW*

Church News

During March and April members of St Matthew's and St Oswald's Churches will be participating in a course titled *40 Days of Community*. We're going to answer the question, "what on earth are WE here for?"

One of the things that we hope to do is to serve the community of New Bilton of which we are a part. Rather than just do our own thing we have spent time finding out what residents have already identified as issues.

Following discussions with reNEW, and the associated council departments we are going to focus our efforts particularly in Campbell and Pinfold Streets. Members of the Christian Life Centre on Lawford Road will join us. On the Easter Saturday 15th April over 150 members will be involved in a street clear up tackling some of the items listed in the reNEW Action Plan. As a part of this we're asking residents in those streets the question, *What Can We Do For You?*

We'd love to help, if we can, perhaps by:

- Clearing / tidying front gardens.
- Doing some basic decoration in a room.
- Helping out with work in back gardens.
- Dumping any items that may need to be got rid of.

We will be distributing leaflets and visiting residents to work out together what might be possible. And I would like to emphasize there's no cost, no catch – it is a free gift. I say on behalf of the Churches of New Bilton, we look forward to hearing from you and serving you.

David Brown, Curate of St Matthew's Church 01788 330 440
or e-mail communityprojects@stmatthews.org.uk

Community Development Officer for New Bilton

Very good news! This person will, all things being equal, be in post by June and based at the New Bilton Community Association Centre to facilitate community participation, support residents with their projects, organise activities and take forward reNEW's urban renewal activities.

Calling All Business Owners and Residents

Corner shops are considered to be a part of our local community and it is important, that in the light of overall improvement of the area, that local shops are not overlooked. At the moment, shops are closing at an alarming rate and it is necessary to preserve the integrity of the small shop, a necessity in the local area given the distance we are from the town centre. We have already lost a post office, newsagents, chemist and wool shop and at one point even the Bridget Street Post Office was under threat.

The Local Economy Action Group is there to help local businesses to improve the presentation of their properties in the area to give a more attractive incentive to people wishing to shop locally. At the moment there are some funds available to help and with the possibility of other funding or grants, could be used to improve the shop frontage and presentation in the area. Please join us to help make a difference. Write to us at 1 Gladstone Street, Rugby CV21 2JP, email www.newbiltonrugby.co.uk or contact Nick Doyle at the Council.

Edward Palusinski, Chairman,
Local Economy Action Group, reNEW

Street reNEWed: 8 to22 Pinfold Street

reNEW residents were invited by letter to participate in a renovation and refurbishment trial project, particularly if they could work together as neighbours in a row of three or more houses. Subsequently, the Housing and Urban Renewal Team contacted those residents that expressed an interest to carry out this very imaginative and exciting project.

Over a period of time, many homes in the reNEW area have been subject to frontage improvements by their owners or may not have been of good quality design. The concept of the scheme is to improve the frontages to a row of properties so that they become a showpiece and an example to other homeowners wanting to improve their homes in future.

We will offer the following improvements:

- new front boundary walls in reclaimed bricks with feature railing
- new front gates to match railings
- new paths to front doors (where required)
- reinstate or repair the decorative mouldings above the bay windows
- new black pvc seamless guttering to properties (where required)
- all homes to have an insulating render applied to the property; this will improve the energy efficiency and aesthetics.

We are sure that the overall impact of the scheme will encourage other homeowners to carry out similar improvements. The tenders for the work have been distributed and we hope work will commence mid-March.

.....and she lived happily ever after.

Mrs B is a 93-year-old widow who lives alone in her property for 55 years. It is a pre-1919 end-terrace 2-bedroom house. She approached Care and Repair in August 2005. When the property was inspected, the house had original electrics in poor condition. The rear door was rotten and water was coming through it – not good for Mrs B's health. The windows to the property were rotten and broken causing cold and damp. The loft insulation was inadequate.

Care and Repair prepared a report and schedule was prepared by Care and Repair. A Care and Repair handy man from the Home Safety Service fitted additional handrails and grab rails. Care and Repair made a grant application to Rugby Borough Council for an electrical wiring upgrade, new windows and new rear door to the property, an over bath shower and new tiling was fitted, along with tiling to new shower area. Rugby Borough Council approved the grant and additional charitable funding secured from several different benevolent funds to cover the shortfall of the cost of Mrs B's grant work. Approved contractors carried out all improvements. Technical officers carried out site inspections during the work. All improvements were completed and signed off in November 2005.

Mrs B is really impressed with all aspects of the works and involvement of officers from the local authority and the Care and Repair team. The grant has allowed Mrs B to remain living comfortably and independently in her own home.

Joan Gledhill, Care and Repair

Editor: This could be you. Why not give the Rugby Borough Council a call to see if you can get help.